

## Design 5969 • Ladies' Sweater with Cables



**Size:** to fit bust 82/86 cm [32 ¼"/33 ¾"], 92/97 cm [36 ¼"/38 ¾"] and 102/107 cm [40 ¼"/42 ¼"]. Directions for the smallest size, with larger sizes in parentheses. If there is only one figure, it applies to all sizes. All measurements are in centimeters (cm). For approximate size measurements in inches, simply multiply by 0.3937 (or divide by 2.54).

**Materials:** yarn **Schachenmayr original, quality Merino Extrafine 120**, 950(1000/1050)g color #00125 orange.

2.75-3.75 mm [size US 2-5] straight needles and 40-60 cm [16"-24"] long circular, and 3-4 mm [size US 2.5-6] straight needles, or size to obtain gauge. Cable needle.

**Accessories:** 4 buttons.

**Rib patt:** RS rows, \*k2, p2; rep from \* to last 2 sts, k2. WS rows, p2, \*k2, p2; rep from \* to end.

**Reverse stockinette stitch (rev St st):** purl RS rows; knit WS rows; in rounds purl all sts.

**Cable pattern:** see chart. Only RS rows are given; on WS rows work sts as they appear. Rep rows 1-56 throughout for patt.

**Gauge:** 32-33 sts and 33 rows in cable patt= 10 cm [4"] on 3-4 mm [size US 2.5-6] needles.

### INSTRUCTIONS

**Back:** with smaller straight needles, cast on 130(138/146) sts. Beg with a WS row and work in rib patt for 12(10/10) cm [4 ¾"(4"/4")], ending with a WS row and inc 23(25/25) sts evenly across last row = 153(163/171) sts.

Change to larger straight needles. Work in cable patt as foll: edge st, work 4(9/13) sts in rev St st, work sts 2-36 of chart once, then work 36-st rep 3 more times, 4(9/13) sts in rev St st, edge st.

Cont in established patt and at the same time, inc 1 st each end, 1 st in from edge sts every 12th(12th/10th) row 5 times = 163(173/181) sts. Work new sts in rev St st. Cont even until piece measures 35(33/31) cm [13 ¾"(13"/12 ¼")], ending with a WS row.

To shape armholes, bind off 4 sts at beg of next 2 rows, 2 sts at beg of next 2(4/6) rows, then 1 st at beg of next 6 rows = 145(151/155) sts. Work even until piece measures 55 cm [21 ¾"], ending with a WS row. Mark center 47 sts. Working k2tog evenly spaced 4 times over each 17-st cable, bind off 9(7/9) sts at beg of next 2 rows. Next row, bind off 7(8/8) sts, work to marked sts, join a 2nd ball of yarn and bind off center 47 sts for neck, then work to end.

Bind off from armhole edges 7(8/8) sts at beg of next 9 rows and at the same time, bind off from each neck edge 3 sts once, then 2 sts once. Total length = 58 cm [22 ¾"].

**Front:** work front same as for back until piece measures 50 cm [19 ¾"], ending with a WS row. Next row (RS), work 61(64/66) sts, join a 2nd ball of yarn and bind off 23 sts for neck, then work to end = 61(64/66) sts rem each side. Work each side separately and bind off at each neck edge 4 sts 3 times, 2 sts once, then 1 st 3 times = 44(47/49) sts rem each side. Work even until piece measures 55 cm [21 ¾"]. Shape shoulders same as for back.

**Sleeves (both alike):** with smaller straight needles, cast on 70 sts. Beg with a WS row and work in rib patt for 8 cm [3 ¼"], ending with a WS row and inc 29 sts evenly spaced across last row = 99 sts.

Change to larger straight needles. Work in cable patt as foll: edge st, work sts 7-36 of cable patt, work 36-st rep once, then sts 1-31 once

# Design 5969 • Ladies' Sweater with Cables

more, edge st. Cont in established patt and at the same time inc 1 st each end, 1 st in from edge sts every 12th(4th/8th) row once, then every 10th(8th/6th) row 10(14/18) times = 121(129/137) sts. Work first 5 inc sts on each side into cable patt, then rem inc sts in rev St st. Cont even until piece measures 45 cm [17 ¾"], ending with a WS row.

To shape cap, bind off 4 sts at beg of next 2 rows, 2 st at beg of next 12(14/16) rows, dec 1 st each end every RS row 12(10/7) times. Bind off 2 sts at beg of next 2(4/8) rows, 3 sts at beg of next 4

rows, then 4 sts at beg of next 6 rows = 25(29/31) sts rem. Bind off rem sts, working k2tog evenly spaced 4 times across center 17 cable sts.

**Finishing:** block pieces to measurements, cover with a damp cloth and allow to dry. Sew shoulder seams. Sew in sleeves. Sew side and sleeve seams.

Collar: with circular needle and RS facing, beg about 3 cm [1 ¼"] below left shoulder seam (see \* on diagram), pick up and k148 sts evenly along neck edge, then 9 more sts behind first 9 sts for collar underlap = 157 sts.

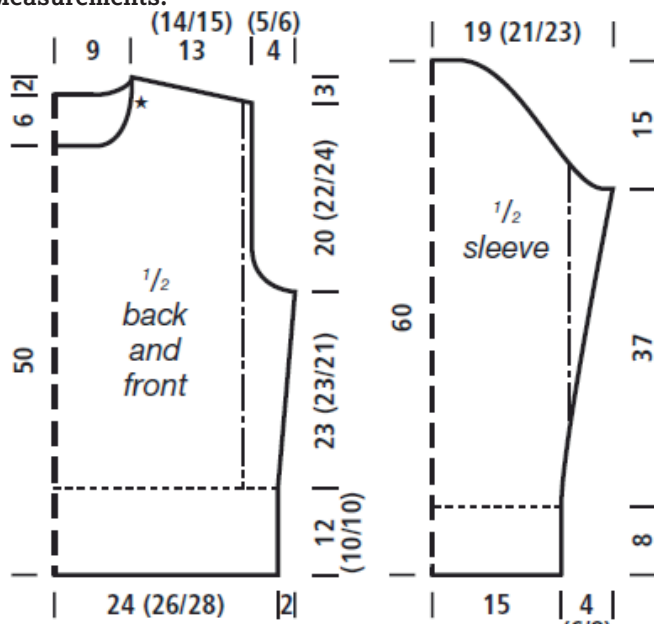
Beg with a WS row and work back and forth as foll: edge st, k8, (k2, p2, k2, p1) 19 times, k2, p2, k10, edge st.

Next row (RS), edge st, k8, (p2, k2, p2, k1) 19 times, p2, k2, p2, k8, edge st. Cont as established until collar measures 4 cm [1 ½"], ending with a RS row. Next row (WS), work in established patt and make 1 purlwise tbl after each p1 across = 176 sts. Keeping first 9 and last 9 sts in established patt, work in rib patt over center 158 sts until collar measures 6 cm [2 ¼"], ending with a RS row.

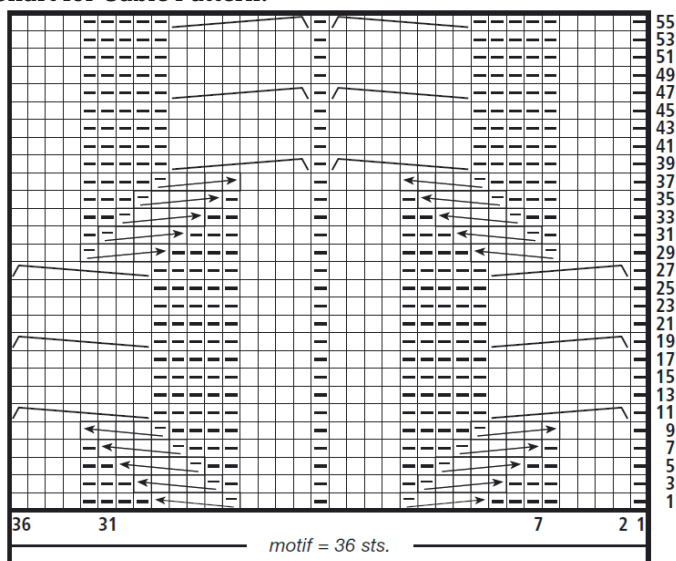
Next row (WS), edge st, k3, bind off next 3 sts for buttonhole, then work to end. Cast on 3 sts over buttonhole on next row. Cont in established patt and make rem 3 buttonholes, spacing each 5 cm [2"] apart. Work even until collar measures 22 cm [8 ¾"]. Bind off all sts in patt.

Sew buttons to inside of front band opposite buttonholes, so they are on the outside when collar is turned out (see photo).

**Measurements:**



**Chart for Cable Pattern:**



**Key:**

- = k on RS; p on WS
- ▣ = p on RS; k on WS
- = slip 1 st to cn and hold in back, k4, then p1 from cn
- ← = slip 4 sts to cn and hold in front, p1, then k4 from cn
- ↔ = slip 4 sts to cn and hold in back, k4, then k4 from cn
- ↔ = slip 4 sts to cn and hold in front, k4, then k4 from cn