

Design S8075 • Ladies Crochet Top

One size: XS to XL.

Materials: Schachenmayr SMC Catania.

350 g #00262 blue haze. On US D/3 [3 mm] crochet hook, or size to obtain gauge.

Basic pattern: cast-on mult of 6 + 1 ch + 3 turning ch. After the ch cast-on work RS and WS rows foll Chart. At beg of row work 3 ch to stand for 1st dc, or 4 ch to stand for 1st tr. Work row 1 once, then rep rows 2-13 throughout for patt.

Gauge: with 3 mm hook and Basic Patt 21 sts and 8 rows, each to 4" [10 cm].

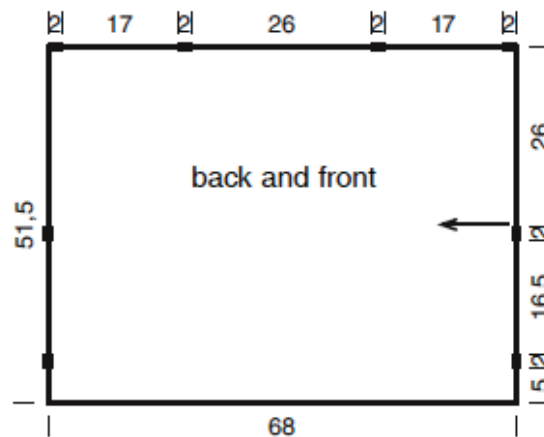
METHOD

Back: work crosswise, see arrow in Line Chart.

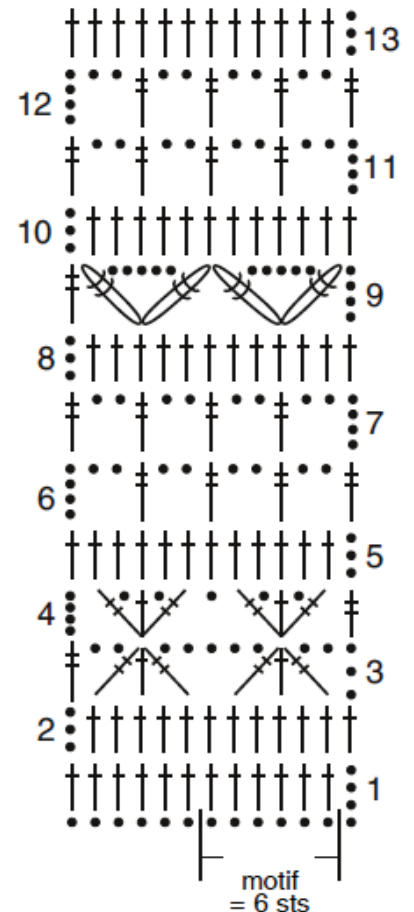
Cast on 109 ch + 3 ch for turning and work in Basic Patt rows 1 to 13 once, rows 2 to 13 3 times, rows 2 to 5 once, then to end 1 row dc = 54 rows = 26¾" [68 cm].

Front: proceed as for back.

Finishing: block pieces to measurements, cover with a damp cloth and allow to dry. Close about ¾" [2 cm] across shoulder and side seams as marked by a thick line in the Line Chart.



Chart



Legend

● = 1 chain (ch)

↑ = 1 double crochet (dc)

↑↑ = 1 treble (tr)

↑↑↑ = work off 1 tr, 1 dc and 1 tr off tog

↑↑↑ = work 1 tr, 1 ch, 1 dc, 1 ch and 1 tr, working the tr and dc into the same st

↑↑ = work off 2 tr tog, working each tr into the same st

↑↑↑↑ = 4 tr worked off tog, working the first 2 tr into the same st as shown, and the last two tr into the 6th foll st